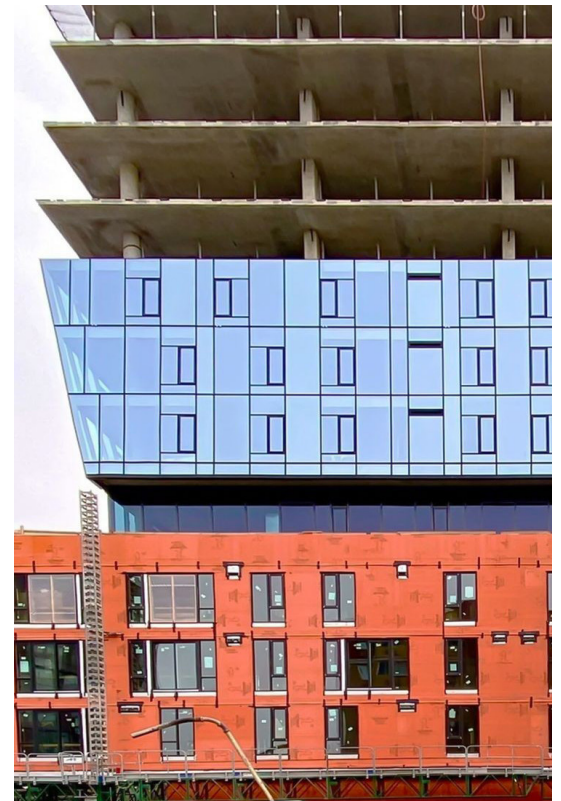


The Skyglass project in Seattle, WA, features 23,000 sq. ft. of WrapShield SA Self-Adhered membrane from VaproShield, applied across the high-rise's common areas. Designed to enhance energy efficiency, WrapShield SA delivers a robust weather barrier on both gypsum sheathing and concrete substrates, helping shield the building from moisture penetration during and after construction. The installation of WrapShield SA as a continuous air barrier system enhanced the building's resilience while reducing HVAC usage, resulting in energy savings and a smaller carbon footprint. By using WrapShield SA, the Skyglass project aligns with sustainable construction goals while offering tenants a more comfortable and durable living environment.

Washington State's stringent C402.5 Energy Code entails a tightly sealed building envelope, an area where WrapShield SA was pivotal for Skyglass. Tested under ASTM E2357 standards, the membrane ensures minimal air infiltration, meeting energy efficiency benchmarks and enhancing the building's overall performance. Its airtight properties support a significant reduction in energy costs, directly benefiting occupants by lowering monthly utility expenses. WrapShield SA's role in creating an energy-efficient structure reinforces the building's long-term value and sustainability, positioning Skyglass as a modern, eco-friendly choice within Seattle's urban landscape.





The Specifications

| | |
|----------------------|--------------------------------------------------------------------------------------|
| VaproShield Solution | WrapShield SA Self-Adhered |
| Industry Type | Mixed Use |
| Construction Type | New |
| Architect | Hewitt Architects www.hewittseattle.com |
| Contractor | Venture www.ventureseattle.com |
| VaproShield Rep | NW Partners |

